



FAMED SAĞLIK TIBBİ  
CİHAZLARI LTD ŞTİ.

# T5 AI INTELLIGENT SCALP ANALYZER



## AI-Powered Professional Hair & Scalp Analysis System

T5 AI Intelligent imager is developed with the goal of solving scalp problems. It integrates ISP image processing technology and three spectrum light-sensing imaging technology. By virtue of a high definition lens and three types of light sources, combined with AI algorithms and image processing capabilities, it converts the microscopic conditions of the scalp into visual images and conducts analysis. The product is designed with the original intention of professionally and objectively analyzing thirteen scalp problems while ensuring flexible operation. It can detect five key areas: the forehead, left and right sides, top of the head, and occipital area. It comprehensively evaluates hair follicle health, sebum secretion, inflammation, scalp barrier function, and potential hair loss risks, helping to fully grasp the real state of the scalp.

### THIRTEEN DETECTION INDICATORS



Moisture



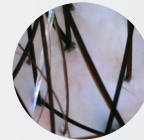
Scalp sebum



Blocked hair  
follicles



Hair densit



Dandruff



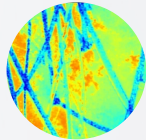
Sensitivit



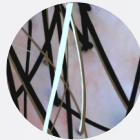
Red area  
map



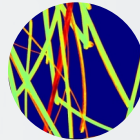
Hair  
thickness



Heat map  
of sensitivity



Gray hair



Heat map of  
pigment



Hair follicle  
health



Scalp  
condition

### PROFESSIONAL APPLICATION AREAS



Hair Transplant  
Clinics



Beauty  
Salons



Hair Clinics  
& Trichology Centers



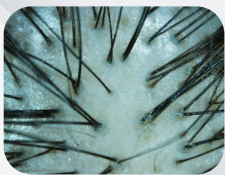
Hair  
Salons



Home  
Use

## WITH ADVANCED ARTIFICIAL INTELLIGENCE TECHNOLOGY:

- 3 Spectrum Analysis System  
(White Light / UV / Polarized Light)
- 13 Smart Analysis Indicators
- 50X & 200X High Magnification
- Hair Follicle & Scalp Analysis
- Real-Time Imaging Automatic
- Reporting System



White light

Under uniform natural light illumination, stray light is filtered out to clearly present visible scalp problems in the epidermis to the naked eye. Under white light, the distribution characteristics of scalp texture, skin grooves, and skin ridges can be observed. It can be used to observe issues such as scalp color, hair density, hair thickness, and scalp sensitivity



Negative polarization light

A special cross-polarizer lens group is adopted, which can effectively reduce direct reflected light. The cross-polarization mode captures images formed by light reflected from the basal layer and dermis of the scalp skin entering the lens. Since the basal layer and dermis are rich in melanin and hemoglobin, the cross-polarization mode is used to observe the deep conditions of the scalp skin (basal layer and dermis),

displaying the status of capillaries and pigmentation. It aids in the auxiliary diagnosis and efficacy observation of symptoms such as white hair, hair thickness, hair follicle health, dandruff, red blood streaks, sensitive inflammation, as well as pigmentation-abnormal scalp problems.



UVlight

With a wavelength of 365nm, the cells and tissues of the scalp skin have a natural function of converting invisible light into visible fluorescence, thereby effectively making the scalp skin a light emitter.

UV light penetrates from the surface layer of the scalp skin to various layers, exciting different fluorescences. These fluorescences enter the lens to form images showing scalp symptoms, which can be used to detect problems such as blockage of scalp hair follicle openings, dandruff, and fluorescent agents.

### PACKAGE CONTENTS

- Main Unit
- 50X Analysis Handpiece
- 200X Analysis Handpiece
- Moisture Detection Handpiece
- Software System



### 5 DIFFERENT ANALYSIS MODES

- RAPID SCAN
- COMPREHENSIVE TEST
- SINGLE ANALYSIS
- MOISTURE MEASUREMENT
- LIVE PREVIEW

### ADVANCED REPORTING

- ✓ AI-Powered Result Analysis
- ✓ Comparative Imaging
- ✓ Automatic Scoring System
- ✓ PDF Report Generation
- ✓ Product & Care Recommendations

### TECHNICAL FEATURES

- Android Operating System
- HD Camera Technology
- Touch Screen Display
- Cloud Data Storage
- Multi-Device Management
- Custom Watermark System